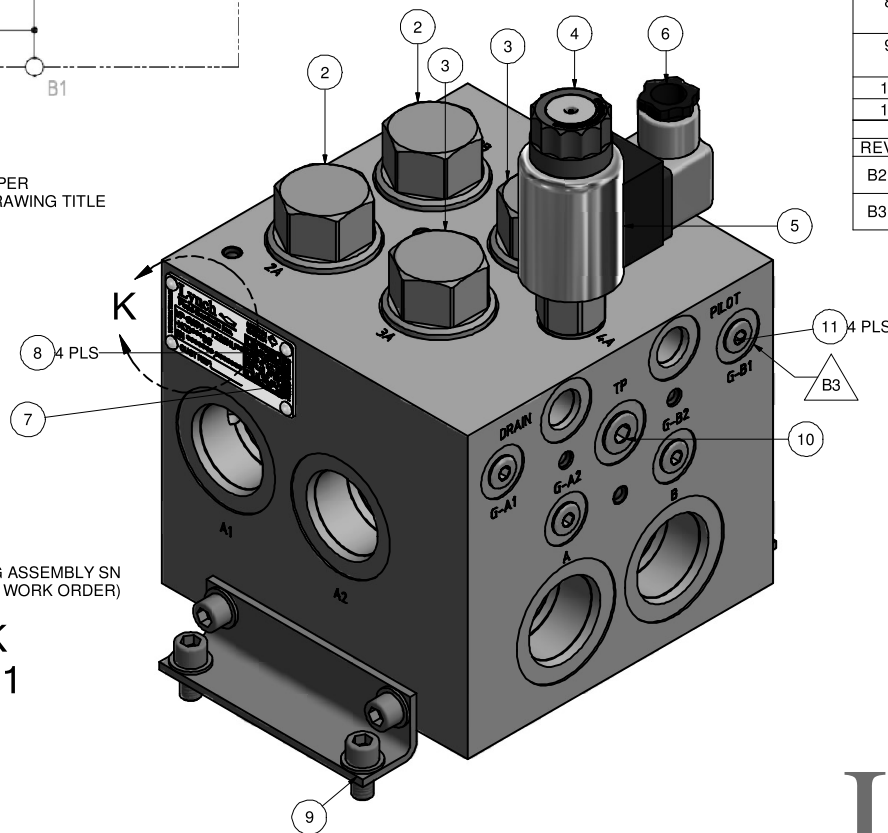
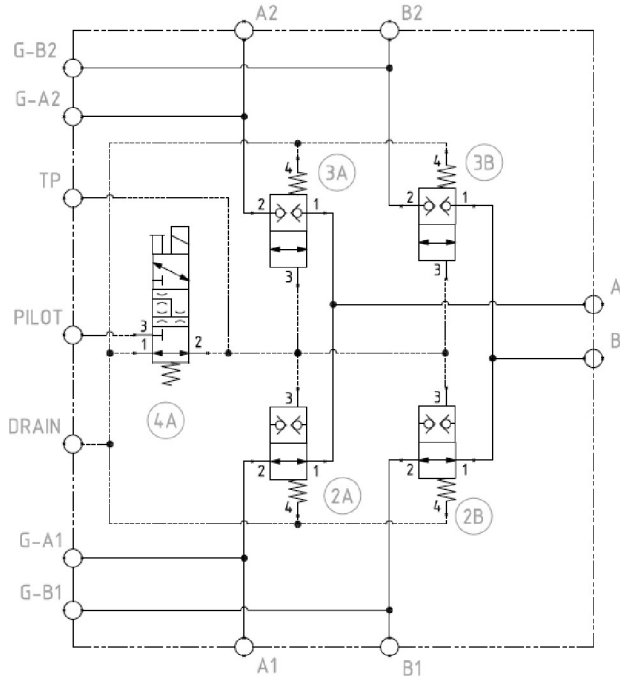


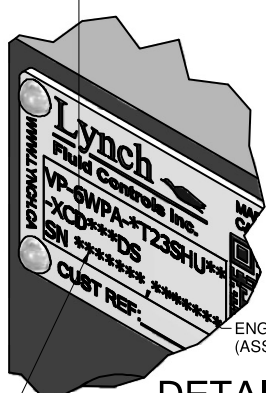
VP6WPA-DT23SHUB3-XCDN28DS

DWG: VP6WPA-DT23SHU1003

DRAWN mguo	04/11/2015	SIZE C	DWG NO VP6WPA-DT23SHU1003	REV B3	SHEET 4 OF 9
CHECKED Radu C	07/11/2015	MODEL CODE VP6WPA-DT23SHUB3-XCDN28DS			
REF:		TITLE 6 Way Selector, Ductile Iron Body, Zn-Ni Plated, CD Type, Solenoid Operated, Hydraulic Piloted, 28Vdc coil, Buna Seals			
DIMENSION TOLERANCES UNLESS OTHERWISE SPECIFIED .X = +/- .030 .XX = +/- .015 .XXX = BASIC O RING DP +/- .002 GROOVE DIA +/- .010 S'FACE DIA +/- .005 ANGULAR +/- 1/2 deg FINISH 80 MICRON REMOVE ALL BURRS		GD&T CLASS: 011 INCH			
3RD Angle Projection		Template Path: Vault\Libraries\Controlled Documents\Engineering\Inventor\DWG\Borders\Assembly.IDW Form Date: Sep 3, 2008 ES-10023 Issued 2008/10/01 MDTTools Version 229 Issued 2012/03/06			
B2 65-45-12 Ductile Iron Zn-Ni Plated 6.00 in x 6.00 in x 6.00 in					
Bill of Material					
ITEM	QTY	PART NUMBER	DESCRIPTION		
1	1	VP6WPA-DT23SHU0002	Manifold Body		
2	2	A012 02D F03	Normally open, balanced poppet, logic element - pilot-to-close		
3	2	A012 01D F03	Normally closed, balanced poppet, logic element - pilot-to-open		
4	1	A009 12D F03	3-way, solenoid-operated directional spool valve		
5	1	770 228	28 VDC coil, ISO/DIN 43650, Form A		
6	1	S18211TC421	DIN 43650A 24VDC, Bypass LED+VDR, M20x1.5		
7	1	TAG-6-125x250-0001-05	Name Tag 1.25" W x 2.50" L, SS		
8	4	DSOH SS # 4X0250	Drive Screw, 18-8 Stainless Steel, 0.116" diameter, 1/4" long, for Hole size 0.104"		
9	1	MK 400 U	4" Mounting Kit with (8) 5/16"-18 x.625" SHCS, (8) ITL Washers, (2) Brackets, Loose Shipping		
10	1	22S-S06	SAE 06, ZLG Mild Steel Plug, Buna		
11	4	22S-S04	SAE 04, ZLG Mild Steel Plug, Buna		
REVISION HISTORY					
REV	NPR / ECN	FACE	REV DESCRIPTION	REV DATE	BY
B2	ECN-00181 6		1. Changed special finishing, is Zn-Ni plating, was electroless Nickel plating	04NOV2015	MG
B3	ECN-00201 2		1. Added gauge ports to A1, A2, B1 and B2	13OCT2016	MG



ENGRAVING PART NUMBER PER THE MODEL CODE IN THE DRAWING TITLE



ENGRAVING ASSEMBLY SN (ASSEMBLY WORK ORDER)

DETAIL K
SCALE 2 : 1

ENGRAVING BODY SN (WORK ORDER TO MACHINE THE BODY)

PROPRIETARY NOTICE
This Drawing describes a Proprietary Product of Lynch Fluid Controls Inc. which may not be reproduced in whole or in part nor given to a third party without written permission from Lynch Fluid Controls Inc.

SYSTEM PRESSURE:
5000 PSI MAX.
SYSTEM FLOW:
60 GPM FOR EACH A & B PORT
PILOT PRESSURE:
300 PSI MIN PRESSURE DIFFERENTIAL BETWEEN PILOT AND DRAIN



1799 Argentia Rd.
Mississauga, Ontario
Canada L5N 3A2
Phone : 1 905 363 2400
Phone : 1 888 626 4365
Fax : 1 905 363 1192
www.lynch.ca